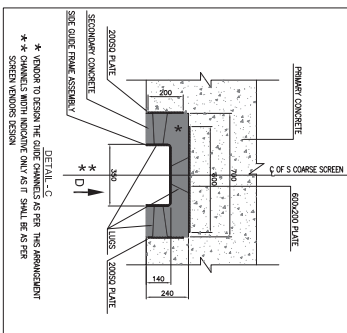
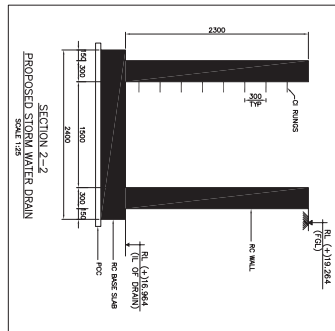
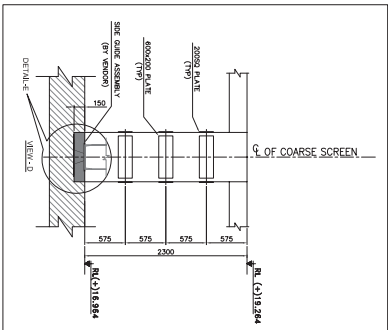


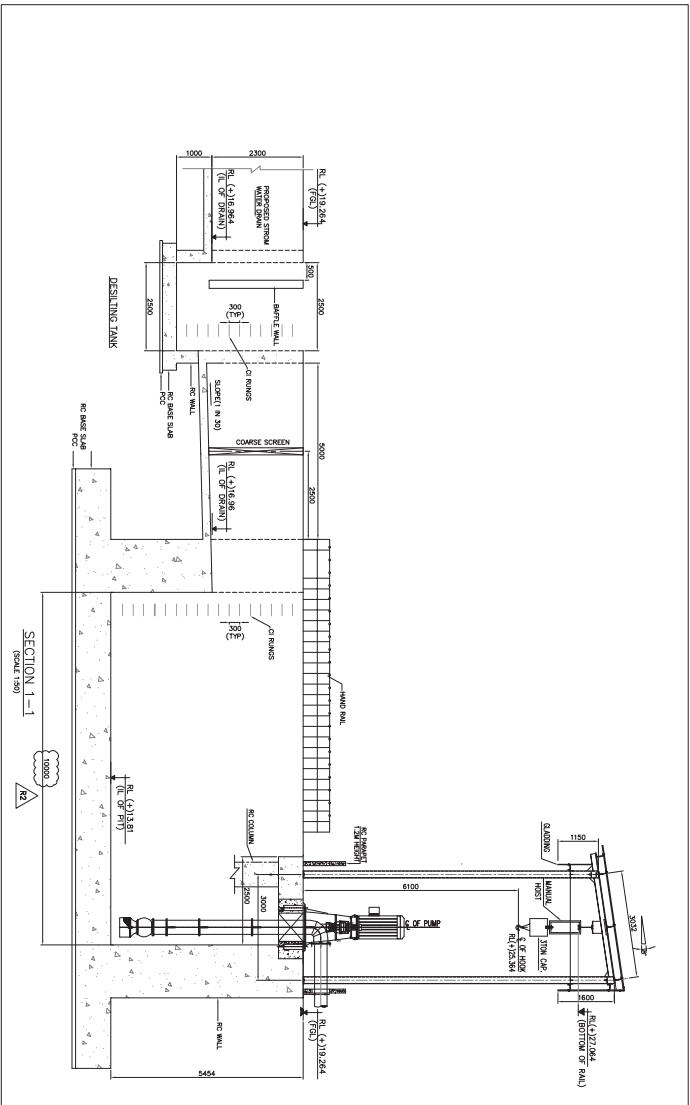
PLAN OF STORM WATER PIT 1



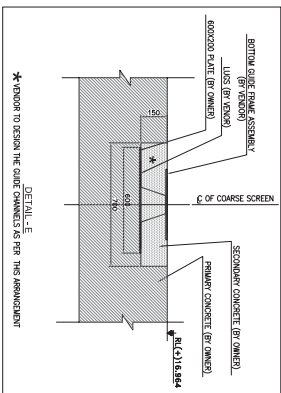
DETAIL - C



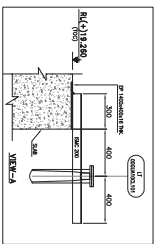
SECTION 2-2



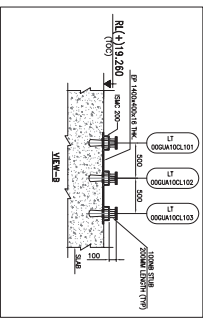
SECTION 1-1



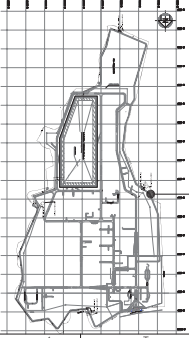
DETAIL - E



VIEW - A



VIEW - B



THIS DRAWING

NOTES:-

1. ALL DIMENSIONS ARE IN MILLIMETERS AND UNLESS NOTED OTHERWISE.
2. DIMENSIONS OF STRUCTURES ARE TO FACE UNLESS NOTED OTHERWISE.
3. DIMENSIONS OF STRUCTURES SHALL BE GIVEN BY FACE.
4. ALL DIMENSIONS INDICATED ARE TYPICAL ONLY.

LEGEND:-

- 1. - CENTER LINE
- 2. - EXISTING LINE
- 3. - EXISTING LEVEL
- 4. - EXISTING LEVEL
- 5. - EXISTING LEVEL
- 6. - EXISTING LEVEL
- 7. - EXISTING LEVEL
- 8. - EXISTING LEVEL
- 9. - EXISTING LEVEL
- 10. - EXISTING LEVEL
- 11. - EXISTING LEVEL
- 12. - EXISTING LEVEL
- 13. - EXISTING LEVEL
- 14. - EXISTING LEVEL
- 15. - EXISTING LEVEL
- 16. - EXISTING LEVEL
- 17. - EXISTING LEVEL
- 18. - EXISTING LEVEL
- 19. - EXISTING LEVEL
- 20. - EXISTING LEVEL
- 21. - EXISTING LEVEL
- 22. - EXISTING LEVEL
- 23. - EXISTING LEVEL
- 24. - EXISTING LEVEL
- 25. - EXISTING LEVEL
- 26. - EXISTING LEVEL
- 27. - EXISTING LEVEL
- 28. - EXISTING LEVEL
- 29. - EXISTING LEVEL
- 30. - EXISTING LEVEL
- 31. - EXISTING LEVEL
- 32. - EXISTING LEVEL
- 33. - EXISTING LEVEL
- 34. - EXISTING LEVEL
- 35. - EXISTING LEVEL
- 36. - EXISTING LEVEL
- 37. - EXISTING LEVEL
- 38. - EXISTING LEVEL
- 39. - EXISTING LEVEL
- 40. - EXISTING LEVEL
- 41. - EXISTING LEVEL
- 42. - EXISTING LEVEL
- 43. - EXISTING LEVEL
- 44. - EXISTING LEVEL
- 45. - EXISTING LEVEL
- 46. - EXISTING LEVEL
- 47. - EXISTING LEVEL
- 48. - EXISTING LEVEL
- 49. - EXISTING LEVEL
- 50. - EXISTING LEVEL
- 51. - EXISTING LEVEL
- 52. - EXISTING LEVEL
- 53. - EXISTING LEVEL
- 54. - EXISTING LEVEL
- 55. - EXISTING LEVEL
- 56. - EXISTING LEVEL
- 57. - EXISTING LEVEL
- 58. - EXISTING LEVEL
- 59. - EXISTING LEVEL
- 60. - EXISTING LEVEL
- 61. - EXISTING LEVEL
- 62. - EXISTING LEVEL
- 63. - EXISTING LEVEL
- 64. - EXISTING LEVEL
- 65. - EXISTING LEVEL
- 66. - EXISTING LEVEL
- 67. - EXISTING LEVEL
- 68. - EXISTING LEVEL
- 69. - EXISTING LEVEL
- 70. - EXISTING LEVEL
- 71. - EXISTING LEVEL
- 72. - EXISTING LEVEL
- 73. - EXISTING LEVEL
- 74. - EXISTING LEVEL
- 75. - EXISTING LEVEL
- 76. - EXISTING LEVEL
- 77. - EXISTING LEVEL
- 78. - EXISTING LEVEL
- 79. - EXISTING LEVEL
- 80. - EXISTING LEVEL
- 81. - EXISTING LEVEL
- 82. - EXISTING LEVEL
- 83. - EXISTING LEVEL
- 84. - EXISTING LEVEL
- 85. - EXISTING LEVEL
- 86. - EXISTING LEVEL
- 87. - EXISTING LEVEL
- 88. - EXISTING LEVEL
- 89. - EXISTING LEVEL
- 90. - EXISTING LEVEL
- 91. - EXISTING LEVEL
- 92. - EXISTING LEVEL
- 93. - EXISTING LEVEL
- 94. - EXISTING LEVEL
- 95. - EXISTING LEVEL
- 96. - EXISTING LEVEL
- 97. - EXISTING LEVEL
- 98. - EXISTING LEVEL
- 99. - EXISTING LEVEL
- 100. - EXISTING LEVEL

REFERENCE:-

1. IS-2596-1987 (Part 1) - Part 1
2. IS-2596-1987 (Part 2) - Part 2
3. IS-2596-1987 (Part 3) - Part 3
4. IS-2596-1987 (Part 4) - Part 4
5. IS-2596-1987 (Part 5) - Part 5
6. IS-2596-1987 (Part 6) - Part 6
7. IS-2596-1987 (Part 7) - Part 7
8. IS-2596-1987 (Part 8) - Part 8
9. IS-2596-1987 (Part 9) - Part 9
10. IS-2596-1987 (Part 10) - Part 10
11. IS-2596-1987 (Part 11) - Part 11
12. IS-2596-1987 (Part 12) - Part 12
13. IS-2596-1987 (Part 13) - Part 13
14. IS-2596-1987 (Part 14) - Part 14
15. IS-2596-1987 (Part 15) - Part 15
16. IS-2596-1987 (Part 16) - Part 16
17. IS-2596-1987 (Part 17) - Part 17
18. IS-2596-1987 (Part 18) - Part 18
19. IS-2596-1987 (Part 19) - Part 19
20. IS-2596-1987 (Part 20) - Part 20
21. IS-2596-1987 (Part 21) - Part 21
22. IS-2596-1987 (Part 22) - Part 22
23. IS-2596-1987 (Part 23) - Part 23
24. IS-2596-1987 (Part 24) - Part 24
25. IS-2596-1987 (Part 25) - Part 25
26. IS-2596-1987 (Part 26) - Part 26
27. IS-2596-1987 (Part 27) - Part 27
28. IS-2596-1987 (Part 28) - Part 28
29. IS-2596-1987 (Part 29) - Part 29
30. IS-2596-1987 (Part 30) - Part 30
31. IS-2596-1987 (Part 31) - Part 31
32. IS-2596-1987 (Part 32) - Part 32
33. IS-2596-1987 (Part 33) - Part 33
34. IS-2596-1987 (Part 34) - Part 34
35. IS-2596-1987 (Part 35) - Part 35
36. IS-2596-1987 (Part 36) - Part 36
37. IS-2596-1987 (Part 37) - Part 37
38. IS-2596-1987 (Part 38) - Part 38
39. IS-2596-1987 (Part 39) - Part 39
40. IS-2596-1987 (Part 40) - Part 40
41. IS-2596-1987 (Part 41) - Part 41
42. IS-2596-1987 (Part 42) - Part 42
43. IS-2596-1987 (Part 43) - Part 43
44. IS-2596-1987 (Part 44) - Part 44
45. IS-2596-1987 (Part 45) - Part 45
46. IS-2596-1987 (Part 46) - Part 46
47. IS-2596-1987 (Part 47) - Part 47
48. IS-2596-1987 (Part 48) - Part 48
49. IS-2596-1987 (Part 49) - Part 49
50. IS-2596-1987 (Part 50) - Part 50
51. IS-2596-1987 (Part 51) - Part 51
52. IS-2596-1987 (Part 52) - Part 52
53. IS-2596-1987 (Part 53) - Part 53
54. IS-2596-1987 (Part 54) - Part 54
55. IS-2596-1987 (Part 55) - Part 55
56. IS-2596-1987 (Part 56) - Part 56
57. IS-2596-1987 (Part 57) - Part 57
58. IS-2596-1987 (Part 58) - Part 58
59. IS-2596-1987 (Part 59) - Part 59
60. IS-2596-1987 (Part 60) - Part 60
61. IS-2596-1987 (Part 61) - Part 61
62. IS-2596-1987 (Part 62) - Part 62
63. IS-2596-1987 (Part 63) - Part 63
64. IS-2596-1987 (Part 64) - Part 64
65. IS-2596-1987 (Part 65) - Part 65
66. IS-2596-1987 (Part 66) - Part 66
67. IS-2596-1987 (Part 67) - Part 67
68. IS-2596-1987 (Part 68) - Part 68
69. IS-2596-1987 (Part 69) - Part 69
70. IS-2596-1987 (Part 70) - Part 70
71. IS-2596-1987 (Part 71) - Part 71
72. IS-2596-1987 (Part 72) - Part 72
73. IS-2596-1987 (Part 73) - Part 73
74. IS-2596-1987 (Part 74) - Part 74
75. IS-2596-1987 (Part 75) - Part 75
76. IS-2596-1987 (Part 76) - Part 76
77. IS-2596-1987 (Part 77) - Part 77
78. IS-2596-1987 (Part 78) - Part 78
79. IS-2596-1987 (Part 79) - Part 79
80. IS-2596-1987 (Part 80) - Part 80
81. IS-2596-1987 (Part 81) - Part 81
82. IS-2596-1987 (Part 82) - Part 82
83. IS-2596-1987 (Part 83) - Part 83
84. IS-2596-1987 (Part 84) - Part 84
85. IS-2596-1987 (Part 85) - Part 85
86. IS-2596-1987 (Part 86) - Part 86
87. IS-2596-1987 (Part 87) - Part 87
88. IS-2596-1987 (Part 88) - Part 88
89. IS-2596-1987 (Part 89) - Part 89
90. IS-2596-1987 (Part 90) - Part 90
91. IS-2596-1987 (Part 91) - Part 91
92. IS-2596-1987 (Part 92) - Part 92
93. IS-2596-1987 (Part 93) - Part 93
94. IS-2596-1987 (Part 94) - Part 94
95. IS-2596-1987 (Part 95) - Part 95
96. IS-2596-1987 (Part 96) - Part 96
97. IS-2596-1987 (Part 97) - Part 97
98. IS-2596-1987 (Part 98) - Part 98
99. IS-2596-1987 (Part 99) - Part 99
100. IS-2596-1987 (Part 100) - Part 100

REVISIONS		DATE	BY	CHKD	APPD
1	1	11/11/12	1	1	1
2	2	11/11/12	2	2	2
3	3	11/11/12	3	3	3
4	4	11/11/12	4	4	4
5	5	11/11/12	5	5	5
6	6	11/11/12	6	6	6
7	7	11/11/12	7	7	7
8	8	11/11/12	8	8	8
9	9	11/11/12	9	9	9
10	10	11/11/12	10	10	10
11	11	11/11/12	11	11	11
12	12	11/11/12	12	12	12
13	13	11/11/12	13	13	13
14	14	11/11/12	14	14	14
15	15	11/11/12	15	15	15
16	16	11/11/12	16	16	16
17	17	11/11/12	17	17	17
18	18	11/11/12	18	18	18
19	19	11/11/12	19	19	19
20	20	11/11/12	20	20	20
21	21	11/11/12	21	21	21
22	22	11/11/12	22	22	22
23	23	11/11/12	23	23	23
24	24	11/11/12	24	24	24
25	25	11/11/12	25	25	25
26	26	11/11/12	26	26	26
27	27	11/11/12	27	27	27
28	28	11/11/12	28	28	28
29	29	11/11/12	29	29	29
30	30	11/11/12	30	30	30
31	31	11/11/12	31	31	31
32	32	11/11/12	32	32	32
33	33	11/11/12	33	33	33
34	34	11/11/12	34	34	34
35	35	11/11/12	35	35	35
36	36	11/11/12	36	36	36
37	37	11/11/12	37	37	37
38	38	11/11/12	38	38	38
39	39	11/11/12	39	39	39
40	40	11/11/12	40	40	40
41	41	11/11/12	41	41	41
42	42	11/11/12	42	42	42
43	43	11/11/12	43	43	43
44	44	11/11/12	44	44	44
45	45	11/11/12	45	45	45
46	46	11/11/12	46	46	46
47	47	11/11/12	47	47	47
48	48	11/11/12	48	48	48
49	49	11/11/12	49	49	49
50	50	11/11/12	50	50	50
51	51	11/11/12	51	51	51
52	52	11/11/12	52	52	52
53	53	11/11/12	53	53	53
54	54	11/11/12	54	54	54
55	55	11/11/12	55	55	55
56	56	11/11/12	56	56	56
57	57	11/11/12	57	57	57
58	58	11/11/12	58	58	58
59	59	11/11/12	59	59	59
60	60	11/11/12	60	60	60
61	61	11/11/12	61	61	61
62	62	11/11/12	62	62	62
63	63	11/11/12	63	63	63
64	64	11/11/12	64	64	64
65	65	11/11/12	65	65	65
66	66	11/11/12	66	66	66
67	67	11/11/12	67	67	67
68	68	11/11/12	68	68	68
69	69	11/11/12	69	69	69
70	70	11/11/12	70	70	70
71	71	11/11/12	71	71	71
72	72	11/11/12	72	72	72
73	73	11/11/12	73	73	73
74	74	11/11/12	74	74	74
75	75	11/11/12	75	75	75
76	76	11/11/12	76	76	76
77	77	11/11/12	77	77	77
78	78	11/11/12	78	78	78
79	79	11/11/12	79	79	79
80	80	11/11/12	80	80	80
81	81	11/11/12	81	81	81
82	82	11/11/12	82	82	82
83	83	11/11/12	83	83	83
84	84	11/11/12	84	84	84
85	85	11/11/12	85	85	85
86	86	11/11/12	86	86	86
87	87	11/11/12	87	87	87
88	88	11/11/12	88	88	88
89	89	11/11/12	89	89	89
90	90	11/11/12	90	90	90
91	91	11/11/12	91	91	91
92	92	11/11/12	92	92	92
93	93	11/11/12	93	93	93
94	94	11/11/12	94	94	94
95	95	11/11/12	95	95	95
96	96	11/11/12	96	96	96
97	97	11/11/12	97	97	97
98	98	11/11/12	98	98	98
99	99	11/11/12	99	99	99
100	100	11/11/12	100	100	100

REVISIONS		DATE	BY	CHKD	APPD
1	1	11/11/12	1	1	1
2	2	11/11/12	2	2	2
3	3	11/11/12	3	3	3
4	4	11/11/12	4	4	4
5	5	11/11/12	5	5	5
6	6	11/11/12	6	6	6
7	7	11/11/12	7	7	7
8	8	11/11/12	8	8	8
9	9	11/11/12	9	9	9
10	10	11/11/12	10	10	10
11	11	11			

REVISIONS		DATE	BY	CHKD	APPD
1	1	11/11/12	1	1	1
2	2	11/11/12	2	2	2
3	3	11/11/12	3	3	3
4	4	11/11/12	4	4	4
5	5	11/11/12	5	5	5
6	6	11/11/12	6	6	6
7	7	11/11/12	7	7	7
8	8	11/11/12	8	8	8
9	9	11/11/12	9	9	9
10	10	11/11/12	10	10	10
11	11	11			

REVISIONS		DATE	BY	CHKD	APPD
1	1	11/11/12	1	1	1
2	2	11/11/12	2	2	2
3	3	11/11/12	3	3	3
4	4	11/11/12	4	4	4
5	5	11/11/12	5	5	5
6	6	11/11/12	6	6	6
7	7	11/11/12	7	7	7
8	8	11/11/12	8	8	8
9	9	11/11/12	9	9	9
10	10	11/11/12	10	10	10
11	11	11			

REVISIONS		DATE	BY	CHKD	APPD
1	1	11/11/12	1	1	1
2	2	11/11/12	2	2	2
3	3	11/11/12	3	3	3
4	4	11/11/12	4	4	4
5	5	11/11/12	5	5	5
6	6	11/11/12	6	6	6
7	7	11/11/12	7	7	7
8	8	11/11/12	8	8	8
9	9	11/11/12	9	9	9
10	10	11/11/12	10	10	10
11	11	11			

REVISIONS		DATE	BY	CHKD	APPD
1	1	11/11/12	1	1	1
2	2	11/11/12	2	2	2
3	3	11/11/12	3	3	3
4	4	11/11/12	4	4	4
5	5	11/11/12	5	5	5
6	6	11/11/12	6	6	6
7	7	11/11/12	7	7	7
8	8	11/11/12	8	8	8
9	9	11/11/12	9	9	9
10	10	11/11/12	10	10	10
11	11	11			

REVISIONS		DATE	BY	CHKD	APPD
1	1	11/11/12	1	1	1
2	2	11/11/12	2	2	2
3	3	11/11/12	3	3	3
4	4	11/11/12	4	4	4
5	5	11/11/12	5	5	5
6	6	11/11/12	6	6	6
7	7	11/11/12	7	7	7
8	8	11/11/12	8	8	8
9	9	11/11/12	9	9	9
10	10	11/11/12	10	10	10
11	11	11			

REVISIONS		DATE	BY	CHKD	APPD
1	1	11/11/12	1	1	1
2	2	11/11/12	2	2	2
3	3	11/11/12	3	3	3
4	4	11/11/12	4	4	4
5	5	11/11/12	5	5	5
6	6	11/11/12	6	6	6
7	7	11/11/12	7	7	7
8	8	11/11/12	8	8	8
9	9	11/11/12	9	9	9
10	10	11/11/12	10	10	10
11	11	11			

REVISIONS		DATE	BY	CHKD	APPD
1	1	11/11/12	1	1	1
2	2	11/11/12	2	2	2
3	3	11/11/12	3	3	3
4	4	11/11/12	4	4	4
5	5	11/11/12	5	5	5
6	6	11/11/12	6	6	6
7	7	11/11/12	7	7	7
8	8	11/11/12	8	8	8
9	9	11/11/12	9	9	9
10	10	11/11/12	10	10	10
11	11	11			

REVISIONS		DATE	BY	CHKD	APPD
1	1	11/11/12	1	1	1
2	2	11/11/12	2	2	2
3	3	11/11/12	3	3	3
4	4	11/11/12	4	4	4
5	5	11/11/12	5	5	5
6	6	11/11/12	6	6	6
7	7	11/11/12	7	7	7
8	8	11/11/12	8	8	8
9	9	11/11/12	9	9	9
10	10	11/11/12	10	10	10
11	11	11			

REVISIONS		DATE	BY	CHKD	APPD
1	1	11/11/12	1	1	1
2	2	11/11/12	2	2	2
3	3	11/11/12	3	3	3
4	4	11/11/12	4	4	4
5	5	11/11/12	5	5	5
6	6	11/11/12	6	6	6
7	7	11/11/12	7	7	7
8	8	11/11/12	8	8	8
9	9	11/11/12	9	9	9
10	10	11/11/12	10	10	10
11	11	11			

REVISIONS		DATE	BY	CHKD	APPD
1	1	11/11/12	1	1	1
2	2	11/11/12	2	2	2
3	3	11/11/12	3	3	3
4	4	11/11/12	4	4	4
5	5	11/11/12	5	5	5
6	6	11/11/12	6	6	6
7	7	11/11/12	7	7	7
8	8	11/11/12	8	8	8
9	9	11/11/12	9	9	9
10	10	11/11/12	10	10	10
11	11	11			

REVISIONS		DATE	BY	CHKD	APPD
1	1	11/11/12	1	1	1
2	2	11/11/12	2	2	2
3	3	11/11/12	3	3	3
4	4	11/11/12	4	4	4
5	5	11/11/12	5	5	5
6	6	11/11/12	6	6	6
7	7	11/11/12	7	7	7
8	8	11/11/12	8	8	8
9	9	11/11/12	9	9	9
10	10	11/11/12	10	10	10
11	11	11			

REVISIONS		DATE	BY	CHKD	APPD
1	1	11/11/12	1	1	1
2	2	11/11/12	2	2	2
3	3	11/11/12	3	3	3
4	4	11/11/12	4	4	4
5	5	11/11/12	5	5	5
6	6	11/11/12	6	6	6
7	7	11/11/12	7	7	7
8	8	11/11/12	8	8	8
9	9	11/11/12	9	9	9
10	10	11/11/12	10	10	10
11	11	11			

REVISIONS		DATE	BY	CHKD	APPD
1	1	11/11/12	1	1	1
2	2	11/11/12	2	2	2
3	3	11/11/12	3	3	3
4	4	11/11/12	4	4	4
5	5	11/11/12	5	5	5
6	6	11/11/12	6	6	6
7	7	11/11/12	7	7	7
8	8	11/11/12	8	8	8
9	9	11/11/12	9	9	9
10	10	11/11/12	10	10	10
11	11	11			

REVISIONS		DATE	BY	CHKD	APPD
1	1	11/11/12	1	1	1
2	2	11/11/12	2	2	2
3	3	11/11/12	3	3	3
4	4	11/11/12	4	4	4
5	5	11/11/12	5	5	5
6	6	11/11/12	6	6	6
7	7	11/11/12	7	7	7
8	8	11/11/12	8	8	8
9	9	11/11/12	9	9	9
10	10	11/11/12	10	10	10
11	11	11			

REVISIONS		DATE	BY	CHKD	APPD
1	1	11/11/12	1	1	1
2	2	11/11/12	2	2	2
3	3	11/11/12	3	3	3
4	4	11/11/12	4	4	4
5	5	11/11/12	5	5	5
6	6	11/11/12	6	6	6
7	7	11/11/12	7	7	7
8	8	11/11/12	8	8	8
9	9	11/11/12	9	9	9
10	10	11/11/12	10	10	10
11	11	11			

REVISIONS		DATE	BY	CHKD	APPD
1	1	11/11/12	1	1	1
2	2	11/11/12	2	2	2
3	3	11/11/12	3	3	3
4	4	11/11/12	4	4	4
5	5	11/11/12	5	5	5
6	6	11/11/12	6	6	6
7	7	11/11/12	7	7	7
8	8	11/11/12	8	8	8
9	9	11/11/12	9	9	9
10	10	11/11/12	10	10	10
11	11	11			

REVISIONS		DATE	BY	CHKD	APPD
1	1	11/11/12	1	1	1
2	2	11/11/12	2	2	2
3	3	11/11/12	3	3	3
4	4	11/11/12	4	4	4
5	5	11/11/12	5	5	5
6	6	11/11/12	6	6	6
7	7	11/11/12	7	7	7
8	8	11/11/12	8	8	8
9	9	11/11/12	9	9	9
10	10	11/11/12	10	10	10
11	11	11			

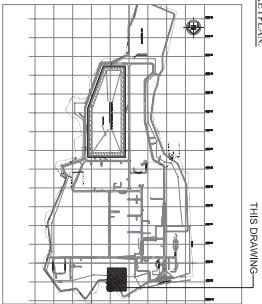
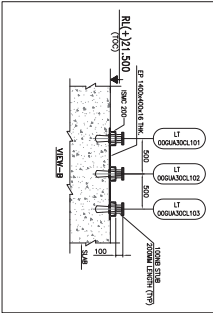
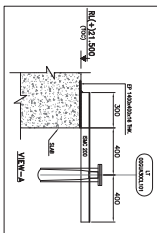
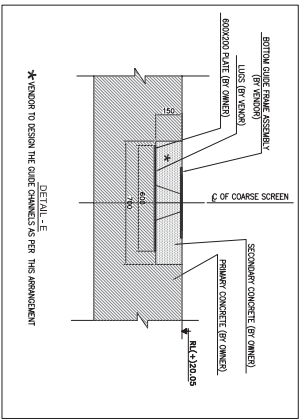
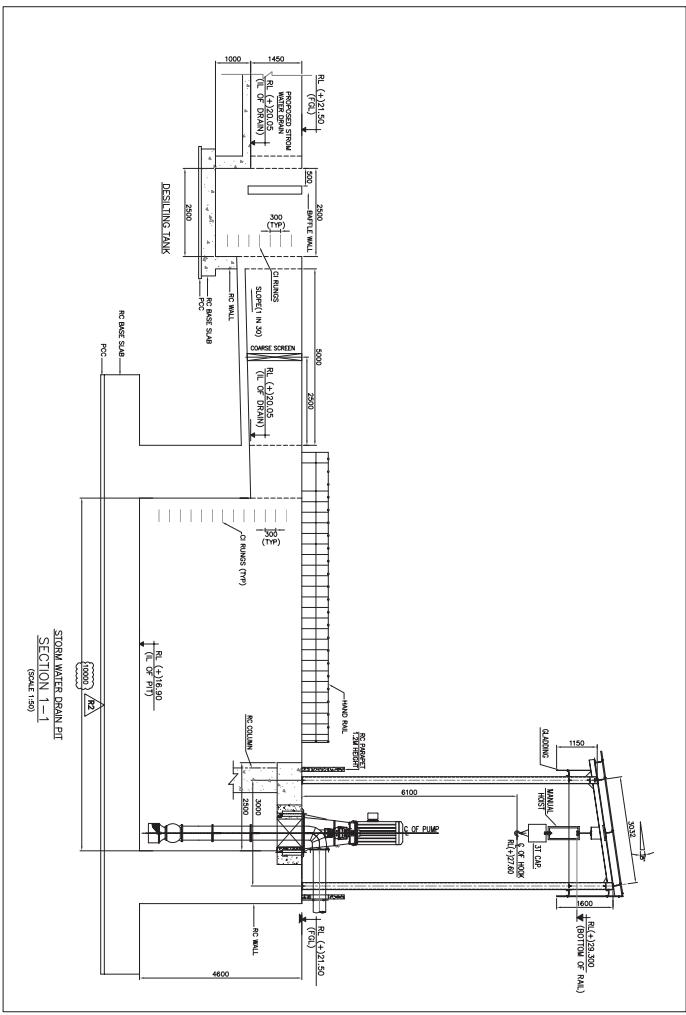
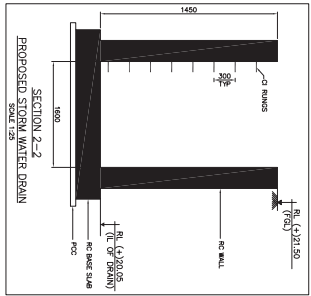
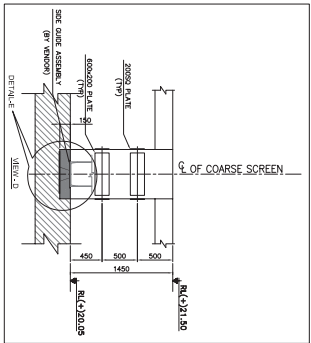
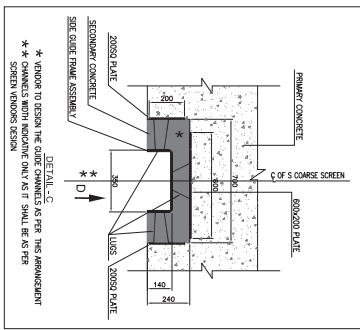
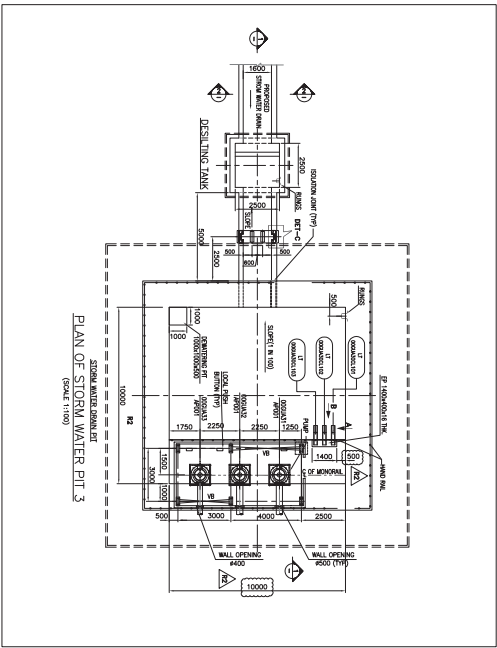
REVISIONS		DATE	BY	CHKD	APPD
1	1	11/11/12	1	1	1
2	2	11/11/12	2	2	2
3	3	11/11/12	3	3	3
4	4	11/11/12	4	4	4
5	5	11/11/12	5	5	5
6	6	11/11/12	6	6	6
7	7	11/11/12	7	7	7
8	8	11/11/12	8	8	8
9	9	11/11/12	9	9	9
10	10	11/11/12	10	10	10
11	11	11			

REVISIONS		DATE	BY	CHKD	APPD
1	1	11/11/12	1	1	1
2	2	11/11/12	2	2	2
3	3	11/11/12	3	3	3
4	4	11/11/12	4	4	4
5	5	11/11/12	5	5	5
6	6	11/11/12	6	6	6
7	7	11/11/12	7	7	7
8	8	11/11/12	8	8	8
9	9	11/11/12	9	9	9
10	10	11/11/12	10	10	10
11	11	11			

REVISIONS		DATE	BY	CHKD	APPD
1	1	11/11/12	1	1	1
2	2	11/11/12	2	2	2
3	3	11/11/12	3	3	3
4	4	11/11/12	4	4	4
5	5	11/11/12	5	5	5
6	6	11/11/12	6	6	6
7	7	11/11/12	7	7	7
8	8	11/11/12	8	8	8
9	9	11/11/12	9	9	9
10	10	11/11/12	10	10	10
11	11	11			

REVISIONS		DATE	BY	CHKD	APPD
1	1	11/11/12	1	1	1
2	2	11/11/12	2	2	2
3	3	11/11/12	3	3	3
4	4	11/11/12	4	4	4
5	5	11/11/12	5	5	5
6	6	11/11/12	6	6	6
7	7	11/11/12	7	7	7
8	8	11/11/12	8	8	8
9	9	11/11/12	9	9	9
10	10	11/11/12	10	10	10
11	11	11			

REVISIONS		DATE	BY	CHKD	APPD
1	1	11			



KEYPLAN:

THIS DRAWING

NOTES:-

2. ALL UNITS ARE BASED ON THE REDUCED LEVEL.
3. STORM WATER PIT LOCATIONS SHALL BE CONFIRMED BY OTC.
4. PUMP DIMENSIONS INDICATED ARE TENTATIVE ONLY.

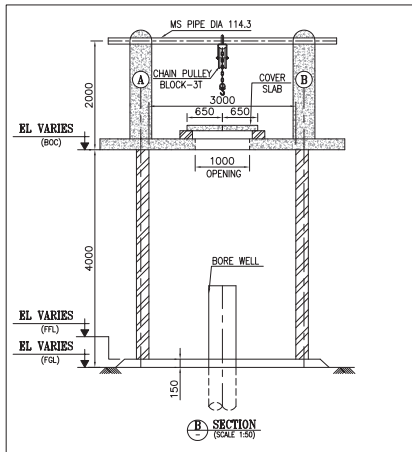
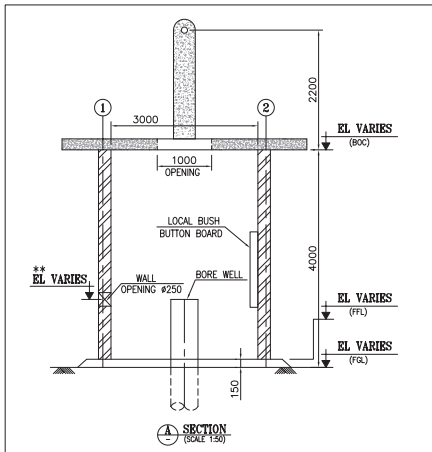
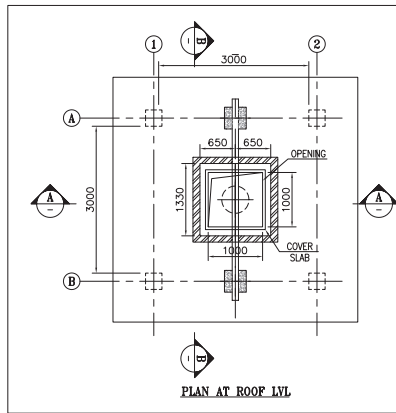
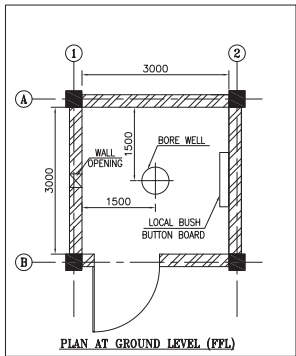
LEGEND:-

- C - CENTER LINE
 RL - REDUCED LEVEL
 FOL - FINISHED GROUND LEVEL
 IL - INVERT LEVEL
 THK - THICKNESS
 TYP - TYPICAL

REFERENCE:-

1. PE-DC-319-100-MC01 (REV-9A) - PLOT PLANE

[illegible]



NOTES:-

1. ALL DIMENSIONS ARE IN MILLIMETERS AND LEVLES ARE IN METERS UNLESS OTHERWISE SPECIFIED.
2. TEMPORARY LADDER SHALL BE USED TO ACCESS THE PUMP HOUSE ROOF DURING MAINTENANCE.
3. ** ELEVATION OF WALL OPENING FOR PIPING SHALL BE ADJUSTED AS PER SITE CONDITION.

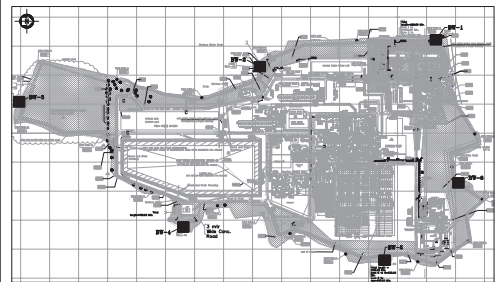
LEGEND:-

- FFL -- FINISHED FLOOR LEVEL
FGL -- FINISHED GROUND LEVEL
BOC -- BOTTOM OF CONCRETE

REFERENCE DWG:-

1. PE-DG-319-100-M001 (REV-9A) - PLOT PLAN

KEY PLAN:-



LOCATION AND RL OF BORE WELLS (6 NOS)					
SL.NO.	BORE WELL	LOCATION	GRID/ORDINATES		REMARKS
			EASTING	NORTHING	
1	BW-1	BACK (WEST) SIDE OF SECURITY HOSTEL	9675.635	9831.867	28.604
2	BW-2	BACK (WEST) SIDE OF OTC SITE OFFICE	9768.124	9224.878	20.188
3	BW-3	SOUTH END OF PLANT. (SOUTH-WEST SIDE OF 2ND GATE)	9889.688	8394.469	20.345
4	BW-4	BACK (EAST) SIDE OF H2 PLANT.	10321.343	8960.529	20.196
5	BW-5	BACK (EAST) SIDE OF SWITCH YARD.	10435.812	9654.642	20.06
6	BW-6	NORTH END OF PLANT. (NORTH-WEST SIDE OF GBC BUILDING)	10169.176	9909.205	20.345

RO	06.01.14	FOR APPROVAL	MJR	AS	
REV.	DATE	DESCRIPTION	DRN.	STR.	MECH. ELEC. INST.
FICHTNER Consulting Engineers (India) Private Limited Chennai			ONGC TRIPURA POWER COMPANY PRIVATE LIMITED. 726.6 MW COMBINED CYCLE POWER PROJECT PALLATANA, TRIPURA		
DRAWN: MJR 06.01.14 DESIGNED: MJR 06.01.14 CHECKED: AS 06.01.14 DEPT HEAD: GR 06.01.14 PROJECTOR: DKS/RUV 06.01.14			TITLE: GENERAL ARRANGEMENT DEEP TUBE WELL PUMP HOUSE		
PRELIMINARY TENDER ENGINEERING			DEPT. MECH. JOB NO. 1113112 SCALE: NTS REV. DWG NO. 20-1113112-M-010 R0		